

The HiveR Package

Bryan A. Hanson

June 2, 2014

This document describes some features of the HiveR package.¹ The current release contains a core set of functions for creating and drawing hive plots.² Additional features are contemplated. There may well be bugs and features that can be improved – your comments are always welcome.³

As with any R package, details on functions discussed below can be found by typing `?function_name` in the R console after installing HiveR. A complete list of functions available can be seen by typing `?HiveR` and then at the bottom of the page that opens, click on the index link.

Background, Inspiration and Motivation

HiveR was inspired by the concept of hive plots as developed by Martin Krzywinski at the Genome Sciences Center (www.hiveplot.com). Hive plots are a reaction to "hairball" style networks in which the layout of the network is arbitrary and hypersensitive to even small changes in the underlying network. Hive plots are particularly well-suited for comparing networks, as well as for the discovery of emergent properties of networks.

The key innovation in a hive plot, compared to other means of graphically displaying network structure, is how node information is handled. In a hive plot, there is a node coordinate system consisting to two parts. First, nodes are assigned to axes based upon qualitative or quantitative characteristics of the the node, for instance membership in a certain category. As will be discussed later, this assignment process is key to constructing a hive plot. Second, the position of the node along the axis, the radius, is based upon some quantitative characteristic of the node. Edges are handled in a fairly standard way, but may be colored or have a width or weight which encodes an interesting value.

In creating a hive plot, one maps network parameters to the plot, and thus the process can be readily tuned to meet one's needs. The mappable parameters are listed in Table 1, and the mapping is limited only by one's creativity and the particular knowledge domain. Thus ecologists have their own measures of food webs, social network analysts have various measures describing interconnectedness etc. An essential point is that mapping network parameters in this way results in a reproducible plot.

Krzywinski has an excellent paper detailing the features and

¹ HiveR version 0.2-27

² <http://github.com/bryanhanson/HiveR> or CRAN.R-project.org/package=HiveR

³ Contact info and issues tracking can be found at the web sites above

virtues of hive plots and is a must-read.⁴ He notes the following virtues of hive plots:

- Hive plots are rational in that only the structural properties of the network determine the layout.
- Hive plots are flexible and can be tuned to show interesting features.
- Hive plots are predictable since they arise from rules that map network features to plot features.
- Hive plots are robust to changes in the underlying network.
- Hive plots of different networks can be compared.
- Hive plots are transparent and practical.
- Plots of networks are generally complex and require some investment to understand. Complexity plots well in a hive plot and details can be inspected.

mappable hive plot parameters
Axis to which a node is assigned
Radius of a node
Color of a node
Size of a node
Color of an edge
Width or weight of an edge

⁴ Martin Krzywinski, Inanc Birol, Steven JM Jones, and Marco A Marra. Hive plots – rational approach to visualizing networks. *Briefings in Bioinformatics*, 2011. DOI: 10.1093/bib/bbr069. URL <http://bib.oxfordjournals.org/content/early/2011/12/09/bib.bbr069.abstract>

Table 1: Hive plot features that can be mapped to network parameters

Inspired by the examples given by Krzywinski in his materials on the web, I created the *R* package `FuncMap` in December 2010.⁵ This single function package maps the function calls made by an *R* package into 3 types: sources, which are functions that make only outgoing calls, sinks, which take only incoming calls, and managers, which do both.

`HiveR` takes things quite a bit further. `HiveR` is a fresh implementation of hive plots in *R*, not a port of the original *Perl* version *per se*. As such, it does some things differently, and not all features are implemented (and they may or may not be in the future). `HiveR` will draw 2D hive plots with 2-6 axes in a style close to the original. However, `HiveR` adds value by making 3D, interactive plots possible when there are 4-6 axes. These 3D plots were inspired by the ideas of VSEPR theory in chemistry: the axes of these 3D plots are arranged with

⁵ Hanson, 2011

tetrahedral, trigonal bipyramidal or octahedral geometries for 4-6 axes respectively (see Figure 1 and wikipedia/VSEPR). The specifics of 3D hive plots will be discussed in a later section.

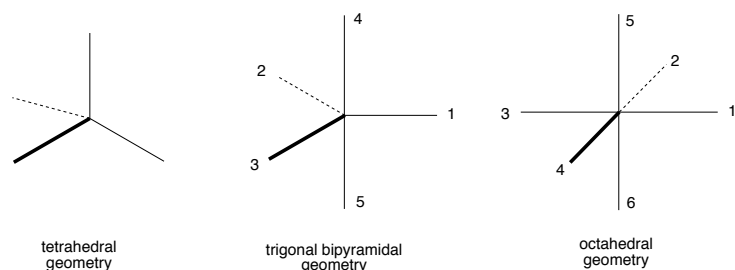


Figure 1: Idealized geometries according to VSEPR theory

HiveR Features

Internal Storage

HiveR stores the information needed to create a hive plot in a `HivePlotData` object which is an S3 class. As an S3 class, this structure can be easily extended by the user to store additional information (though using that information as part of a hive plot would require more work). Utilities are provided to summarize, troubleshoot and check the integrity of these objects (functions `sumHPD` and `chkHPD` respectively). The structure and content of a `HivePlotData` object is shown in Table 2.

Generation of Random Network Data Sets

HiveR has the ability to generate random network data sets using function `ranHiveData`. These are primarily useful for testing and demonstrations. A data set has a type, either 2D or 3D. Type 2D may have 2-6 axes and is plotted in a 2D window using grid graphics which are extremely fast. Type 3D applies to 4-6 axes only and these hive plots are drawn in 3D using `rgl` and are interactive. When using `ranHiveData` you can specify which type you desire.

Built-in Data Sets

HiveR contains two related 2D type data sets, *Safari* and *Arroyo*. These are plant-pollinator data sets which give the number of visits for each plant-pollinator pair. Data for the *E. coli* gene regulatory network is also included; it is derived from the RegulonDB.⁶ Each of these data sets are used in the examples below.

⁶ Gama-Castro et al., 2011

Table 2: The structure of a HivePlotData object

\$nodes	\$id	int	identifier
	\$lab	chr	label
	\$axis	int	axis
	\$radius	num	radius
	\$size	num	size
	\$color	chr	color
\$edges	\$id1	int	1st node id
	\$id2	int	2nd node id
	\$weight	num	width
	\$color	chr	color
\$type		chr	2D or 3D plot
\$desc		chr	description
\$axis.cols		chr	axis colors
- attr		chr	"HivePlotData"

Importing Real Data Sets

The function `dot2HPD` will import files in `.dot` format and convert them to `HivePlotData` objects (see wikipedia/DOT_language). This is done with the aid of two external files. One contains information about how to map node labels to `HivePlotData` properties. The other contains information about mapping edge properties. This approach gives one a lot of flexibility to process the same graph into various hive plots. This process is demonstrated later for the *E. coli* data set. Currently, only a very small set of the `.dot` standard is implemented and one should not expect any particular `.dot` file to process correctly. It is also possible to import an adjacency matrix using `adj2HPD`.

Modifying HivePlotData Sets

Function `mineHPD` has several options for extracting information from within an existing `HivePlotData` object and converting it to a modified `HivePlotData` object. Additional options are readily incorporated. For the current selection, check the help page (`?mineHPD`). This function will be used extensively in the examples that follow. In addition, function `manipAxis` can also be used to modify a `HivePlotData` object by scaling or inverting axes. This can be done on the fly (as the plot is created) or the `HivePlotData` object can be permanently modified.

Making Hive Plots

In a hive plot, because the position of the node along an axis (the radius) is quantitative, the nodes can be plotted at their absolute value (native units), normalized to run between 0...1, plotted by rank or by a combination of ranking and norming. Some aspects of the plot that depend upon these options are shown in Table 3. These different ways of plotting the same data often look dramatically different, and for a particular data set, some methods of plotting may provide more insight. Functions `plotHive` and `plot3dHive` have an argument `method` which controls node plotting on the fly; function `manipAxis` is used in the background and can also be called independently if desired.

<i>method</i>	<i>axis length</i>	<i>center hole</i>	<i>node behavior</i>
native	$f(units)$	asymmetric	nodes may overlap
ranked	$\propto rank(nodes)$	circular	nodes evenly spaced & don't overlap
normed	all equal	circular	nodes may overlap
ranked & normed	all equal	circular	nodes evenly spaced & don't overlap

Table 3: Comparison of methods for plotting nodes

A Simple Example Using a Plant-Pollinator Network

HiveR currently contains the built-in data sets, `Safari` and `Arroyo` which provide a useful demonstration of Hiver.⁷ These are plant-pollinator data sets which were derived from Vasquez and Simberloff.⁸ These describe two-trophic level systems that consist of almost exactly the same suite of plants and pollinators. `Safari` is based upon observations of an undisturbed area, while `Arroyo` is from a nearby location grazed by cattle. The original data is composed of plant-pollinator pairs and a count of visits during a fixed observation period for each pair.

Figures 2 and 3 show two means of plotting `Safari` using package `bipartite`.⁹ Figure 2 is a simple diagram giving plant-pollinator visits as a gray-plot heat map (plants are on the vertical axis). There are two parameters encoded here: the pairings and the number of visits (arguably, the dimensions of the matrix give the number of species involved as well). Figure 3 displays plants across the bottom and pollinators across the top. The width of the connecting bands in

⁷ Be warned: I am not an ecologist and these data sets and plots are merely a demonstration of Hiver

⁸ Vasquez and Simberloff, 2003

⁹ Truthfully we are using the data set `Safariland` from package `bipartite`; `Safari` was derived from `Safariland`.

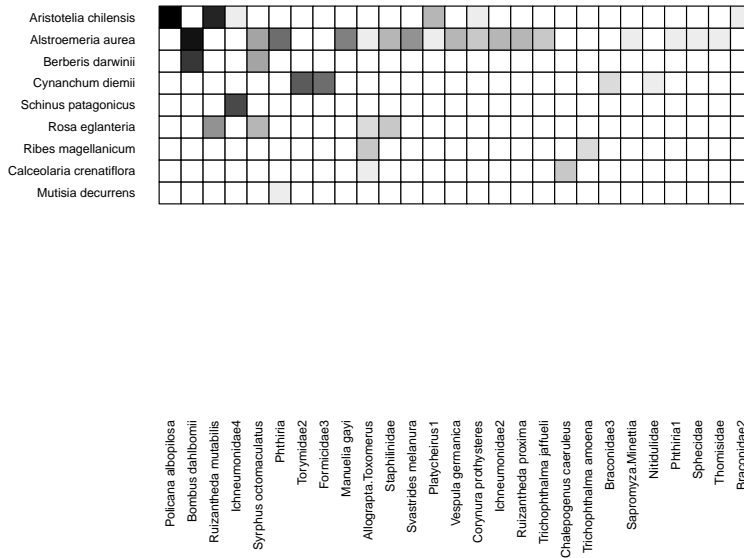


Figure 2: Safariland data set using visweb

the middle encodes the number of visits for a given plant-pollinator pair. The width of the top or bottom panel for a species is the total number of visits in which that species participates. Thus there are three parameters shown in this figure: the pairings, the total visits for a single species, and visits between a given pair. This second plot makes it pretty clear that four plant-pollinator pairs have by far the most number of visits (these are the large gray-filled bands in the middle of the diagram).

Another approach to presenting this network graphically would be to use function `gplot` in the social network analysis package `sna`. `gplot` is flexible and has many options. Figure 4 shows one possible display of `Safari`, plotted with `mode = circle`. In this plot, plant nodes are colored green and insect nodes red. The width of the edges is proportional to the number of visits between a pair of species. Figure 5 shows the same data using the Fruchterman-Reingold algorithm, one which shows that there are actually two networks present (and which is not apparent from the other plots). Edge width here is the same as before, but because the high traffic node pairs are close to each other, the connecting, wide edge looks a bit odd and is easy to miss (clearly, one could experiment to improve this detail).

For a network of this size and complexity, any or some combination of these plots would probably be sufficient to answer many questions. However, we proceed to plot the data as a hive plot to demonstrate some of the features of hive plots. Figure 6 shows `Safari` and `Arroyo` displayed together in a hive panel, which facilitates direct comparison of the two networks. In these plots, plants are on one axis, and pollinators are on the other. Each organism was

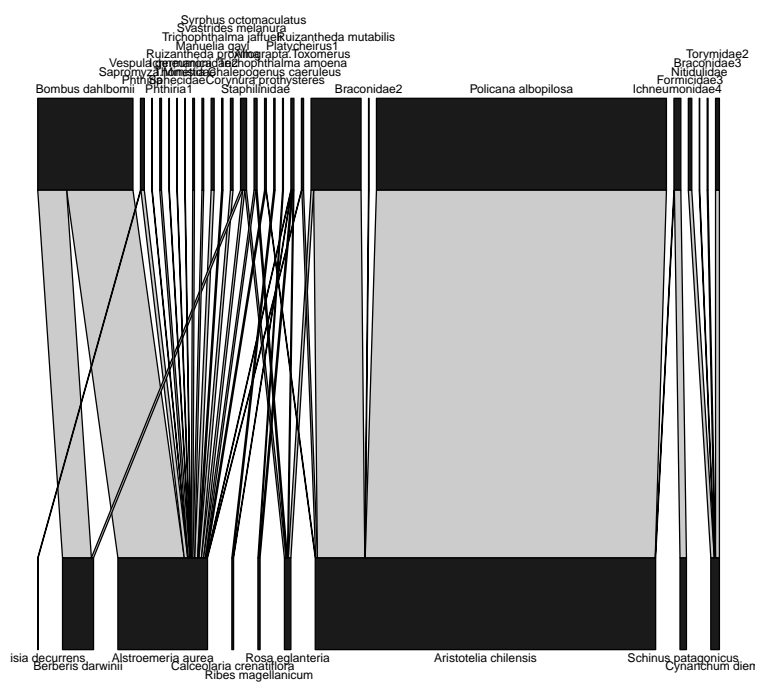


Figure 3: Safariland data set using plotweb

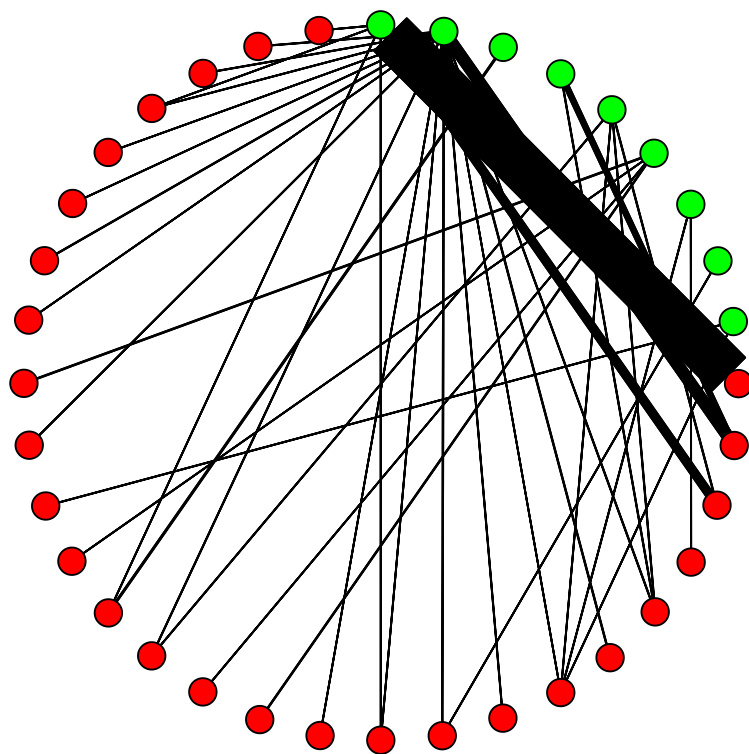


Figure 4: Safariland data set using gplot (mode = circle)

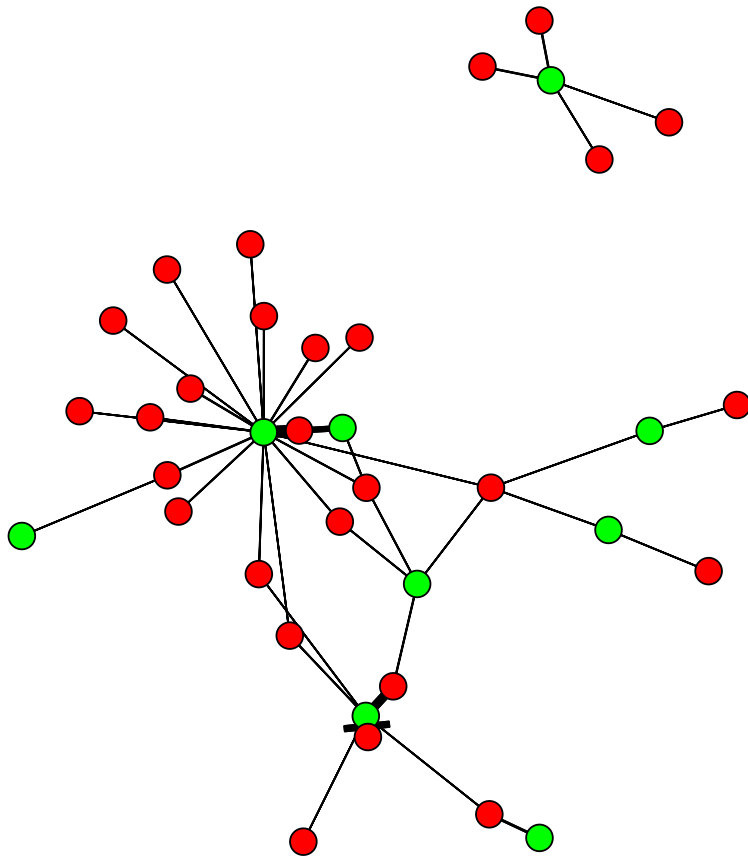


Figure 5: Safariland data set using gplot
(mode = Fruchterman-Reingold)

assigned a radius on its axis based by calculating $|d'|$ using function `dfun` in package `bipartite`. $|d'|$ is an index of specialization; higher values mean the plant or pollinator is more specialized. Edge weights were assigned proportional to the square root of the normalized number of visits of a pollinator to a plant. Thus the width of the edge drawn is an indication of the visitation rate. The transformed number of visits was divided manually into 4 groups and used to assign edge colors ranging from white to red. The redder colors represent greater numbers of visits, and the color-coding is comparable for each figure. Thus both the edge color and the edge weight encode the same information. It would of course be possible to encode an additional variables by changing either edge color or weight, or node size. These plots show a rich amount of information not available from the more standard plots and show that the networks are fundamentally different:

- The degree of specialization with each network is different. This can be seen in the different radii for the nodes in each plot, as well as in the Arroyo panel where the plant axis begins at a lower value.
- A greater number of visits (wider, redder edges) occur between more specialized species (nodes at larger radii) in Safari than Arroyo.
- The huge number of visits encoded in red in Safari (the ungrazed site) is missing in Arroyo.

Some Things to Keep in Mind

Now that we have seen a simple hive plot, it's a good time to review some aspects to keep in mind as you wrap your head around the concept and we move to more complicated plots.

Hive Plots are radially-arranged parallel coordinate plots, and as with any parallel coordinate plot, the order of the axes is critical.¹⁰ In creating a hive plot, assigning the nodes to axes is the hardest task, as no jumping or crossing of axes is allowed (due to bad aesthetics). As a result, you can't make this assignment without thinking about the edges at the same time. This initial mapping process often forces one to reconceptualize one's data, which in turns leads to new insights. By the way, there is no guarantee that any data set can be made into a hive plot, but there are certainly a number of data sets that will give a very useful hive plot after some thought.

For 2D hive plots with 2 or 3 axes, there is no possibility of edges crossing an axis. However, for 4-6 axes, you must guard against this:

¹⁰ Wegman, 1990

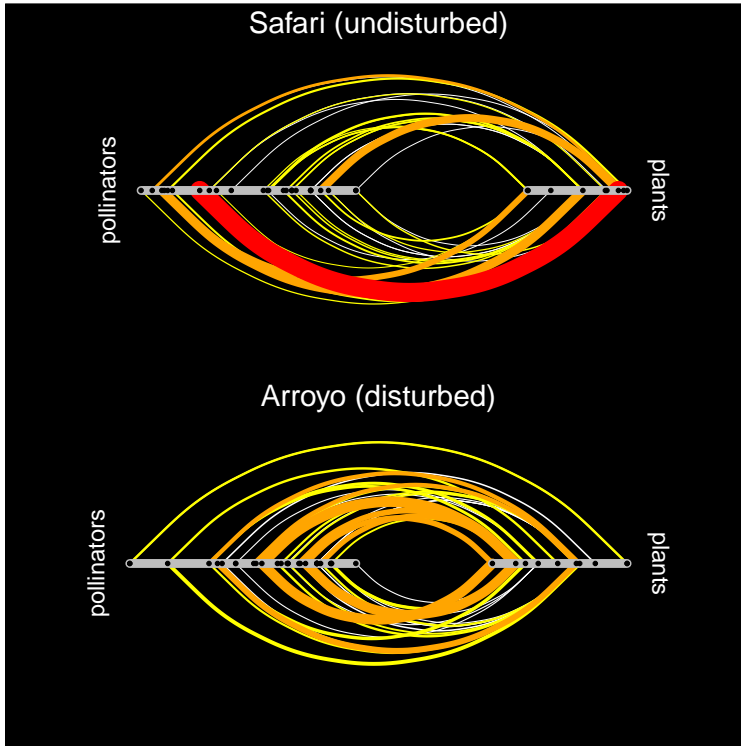


Figure 6: Hive Panel comparing Safari with Arroyo

Edges should go $1 \rightarrow 2, 2 \rightarrow 3, \dots, 5 \rightarrow 6$, but not $1 \rightarrow 5$ for example. For 3D hive plots, no edges can start and end on the same axis (there is no way to place these properly in 3D space). For 4 axes, all axes are adjacent and hence jumping is not an issue. But for 5 or 6 axes, you must guard against this manually. Note that the different axis systems in 3D have different numbers of adjacent axes:

- Tetrahedron: 6 adjacent axis pairs, *crossings are impossible*
- Trigonal bipyramid: 9 adjacent axis pairs¹¹
- Octahedron: 12 adjacent axis pairs

The mapping of nodes to axes is limited only by your creativity and the knowledge domain you work in. For some ideas about how to assign the radius, see table 1 in Krzywinski.¹²

Hive plots are almost agnostic with respect to directed graphs. Most functions don't use any information related to the direction of an edge. However, some of the options in `mineHPD` can take into account directionality by using the first node id as a starting point and the second node id as an ending point (`HPD$edges$id1, id2`).

With 2D hive plots, which are drawn using `grid` graphics, the nodes "on top" and showing are the last drawn nodes. You may wish to sort the nodes before drawing to get a certain effect – the same is true for edges.¹³

¹¹ And the pairs are not equivalent: see Figure 1.

¹² Krzywinski et al., 2011

¹³ While the last thing drawn is on top, they are not strictly drawn in the order given. See the code for `plotHive` for details. This is an open issue related to how `grid.curve` handles its curvature argument.

The *E. coli* Gene Regulatory Network

The *E. coli* gene regulatory network, based upon the RegulonDB,¹⁴ is an excellent example for showing how one can import and process a .dot file to create a hive plot. In this case we will read in a .dot file describing nodes and edges. A portion of this file is shown in Table 4. The .dot file will be processed using an external file to map the edge annotations to hive plot features. Node annotations in the .dot file can be similarly processed, but this particular example contains no node annotations so there's nothing to process. Table 5 shows the contents of the edge instruction file.

¹⁴ Gama-Castro et al., 2011

```
ada;
relA;
betT;
rrsG;
arcA - hybG [interaction=repressor]
fur - exbD [interaction=repressor]
arcA - rutE [interaction=activator]
fnr - cysG [interaction=activator]
fnr - tpx [interaction=repressor]
rcsA - wcaB [interaction=activator]
narL - nrfG [interaction=dual]
```

Table 4: Partial contents of .dot file

dot.tag	dot.val	hive.tag	hive.val
interaction	repressor	color	red
interaction	activator	color	green
interaction	dual	color	orange

Table 5: Contents of EdgeInst.csv

Here we go. First, read in the node and edge information and process it using the edge instruction file (this assumes your working directory is set to the folder with the relevant files).

```
EC1 <- dot2HPD(file = "network_tf_gene.parsed.dot",
  node.inst = NULL,
  edge.inst = "EdgeInst.csv",
  desc = "E coli gene regulatory network (RegulonDB)",
  axis.cols = rep("grey", 3))
```

No node instructions provided, proceeding without them

Before going on, we'll summarize what we've created. Next, we'll assign the node radius based upon the edge degree, then assign the nodes to axes based upon their role as source, manager or sink. Finally, there are some edges which start and end at the same radius on the same axis. These have zero length and cannot be drawn so

they must be removed (these are be transcription factors that regulate themselves in most cases).

```
sumHPD(EC1)

## E coli gene regulatory network (RegulonDB)
## This hive plot data set contains 1597 nodes on 1 axes and 3893 edges.
## It is a 2D data set.
##
## Axis 1 has 1597 nodes spanning radii from 1 to 1
##
## Axes 1 and 1 share 3893 edges
```

```
EC2 <- mineHPD(EC1, option = "rad <- tot.edge.count")
sumHPD(EC2)

## E coli gene regulatory network (RegulonDB)
## This hive plot data set contains 1597 nodes on 1 axes and 3893 edges.
## It is a 2D data set.
##
## Axis 1 has 1597 nodes spanning radii from 1 to 434
##
## Axes 1 and 1 share 3893 edges
```

```
EC3 <- mineHPD(EC2, option = "axis <- source.man.sink")
sumHPD(EC3)

## E coli gene regulatory network (RegulonDB)
## This hive plot data set contains 1597 nodes on 3 axes and 3893 edges.
## It is a 2D data set.
##
## Axis 1 has 45 nodes spanning radii from 1 to 83
## Axis 2 has 1416 nodes spanning radii from 1 to 11
## Axis 3 has 136 nodes spanning radii from 2 to 434
##
## Axes 1 and 2 share 400 edges
## Axes 1 and 3 share 21 edges
## Axes 3 and 2 share 3158 edges
## Axes 3 and 3 share 314 edges
```

```
EC4 <- mineHPD(EC3, option = "remove zero edge")

##
## 125 edges that start and end on the same point were removed

sumHPD(EC4)

## E coli gene regulatory network (RegulonDB)
## This hive plot data set contains 1597 nodes on 3 axes and 3768 edges.
## It is a 2D data set.
##
## Axis 1 has 45 nodes spanning radii from 1 to 83
## Axis 2 has 1416 nodes spanning radii from 1 to 11
## Axis 3 has 136 nodes spanning radii from 2 to 434
##
## Axes 1 and 2 share 400 edges
## Axes 1 and 3 share 21 edges
## Axes 3 and 2 share 3158 edges
## Axes 3 and 3 share 189 edges
```

Notice how the number of axes, radii and edges change through this process.

Finally, we'll need to organize the edge list so that the edges which are repressors are drawn last (you could do this other ways, of course, but we need to know this in order to be able to interpret the plots).

```
edges <- EC4$edges
edgesR <- subset(edges, color == 'red')
edgesG <- subset(edges, color == 'green')
edges0 <- subset(edges, color == 'orange')

edges <- rbind(edges0, edgesG, edgesR)
EC4$edges <- edges

EC4$edges$weight = 0.5
```

Now we're ready to plot! Figure 7 is a hive panel showing this network with different scales for the nodes. Each plot takes about 10 seconds to draw.

3D Hive Plots

HiveR extends the original hive plot concept to 3 dimensions using the interactive graphics package *rgl*. One advantage to this is that 3D hive plots have more pairs of adjacent axes compared to the corresponding 2D hive plot, which cuts down on the possibility of edges crossing axes and makes assigning nodes to axes easier. The interactivity doesn't hurt either!

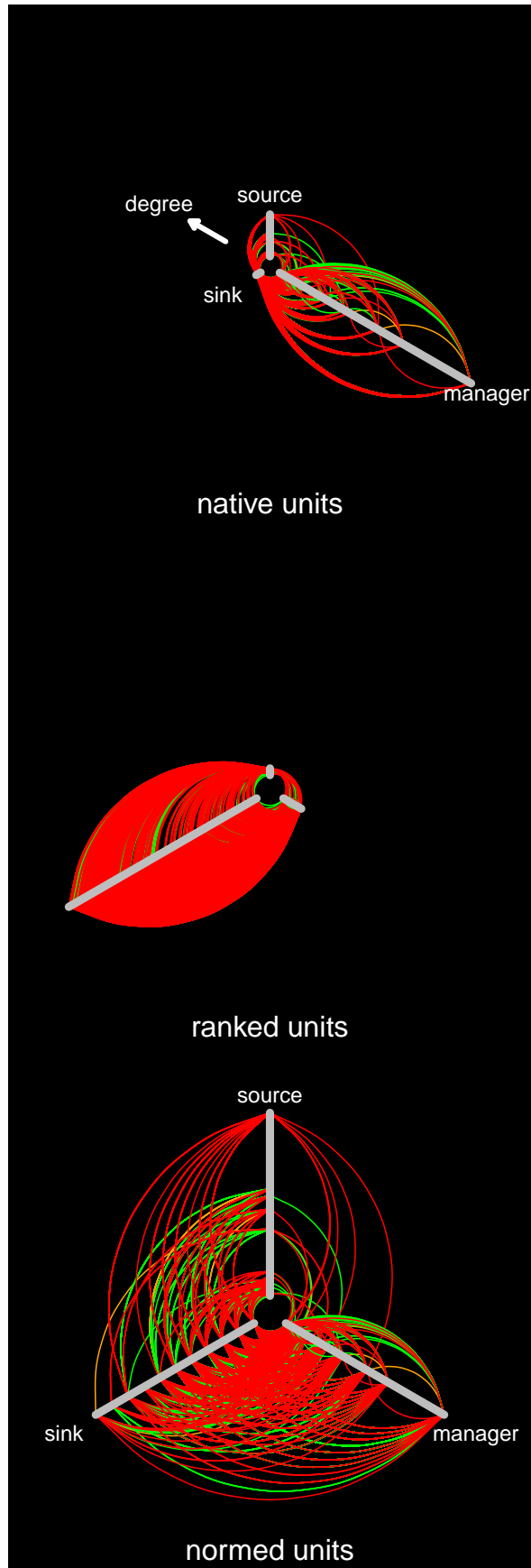
We will demonstrate the process using a recent example of protein-protein interactions.¹⁵ This data set contains interaction data for HIV-human proteins, as well as some related human-human protein interactions. The strength of these interactions are quantified in terms of a MiST score which is derived from mass spectral data after some processing. Data for the interaction of two human cell lines with HIV are available (we'll just use one, but you could make the same plot with the interactions for the other cell line to compare the two).¹⁶

Figure 8 is Figure 3 from the paper. We're going to focus on the portion of this network shown in Figure 9 to demonstrate the conceptual process of mapping data to a hive plot.¹⁷ Figure 10 shows a small, idealized portion of this network for discussion. In this figure, a black dot represents a human protein that interacts with an HIV protein. Human protein D, for example, interacts with two different HIV proteins, PR and IN. However, human protein E interacts

¹⁵ Jaeger et al., 2012

¹⁶ The plots here were created using data provided as supplementary material. A full script of the processing is available from the author.

¹⁷ Remember, this is just one way you might map the raw data

Figure 7: Hive panel of *E. coli* gene regulatory network

with only one HIV protein (PR), but interacts with another human protein F, which in turn interacts with HIV protein Po1. The blue edge between E and F indicates indirect communication between HIV proteins PR and Po1 via the two human proteins.

Figure 11 shows the process of mapping the connections and quantitative information into the hive plot. Each HIV protein node in the original diagram will become an axis in the hive plot.¹⁸ Because there are four of these, we will be making a tetrahedral hive plot with four axes. The human proteins which interact with two HIV proteins will become red edges in the hive plot (and they are red in these figures). Protein D for example will be plotted on the PR axis at a radius of 9 because that is the MiST score for this human protein interacting with this HIV protein. Protein D will also appear on axis IN, but at a radius of 6, because it interacts a bit more weakly with this HIV protein. This process is repeated for all the interactions. Human protein E, on the other hand, only interacts with one HIV protein. As a result, it appears only on the PR axis at a radius of 6. Don't forget that E interacts with F: F is plotted on axis Po1 at a radius of 7 and then E and F are connected by a blue edge signalling the indirect interaction between HIV proteins PR and Po1. Other human proteins which interact with only one HIV protein are plotted on the appropriate axis with a radius corresponding to their MiST score. Finally, any human protein with 2 or more edges is plotted as a larger yellow node, while those with only one edge are plotted in green.

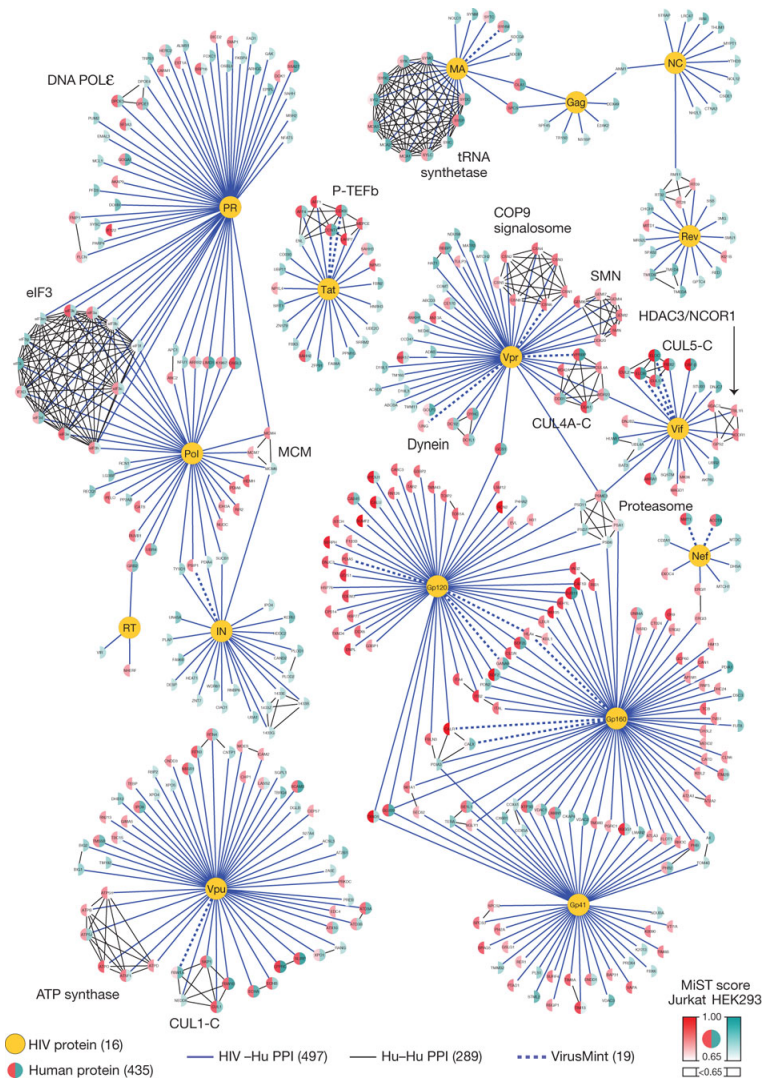
Figure 12 shows the resulting hive plot, using the original data for HIV interacting with HEK cells, drawn using native units. Red edges represent a human protein.¹⁹ Red edges with more or less constant radius are human proteins that interact fairly equally with the HIV proteins on each axis. There is one red edge which shows a strong interaction with one HIV protein (PR) and a weak interaction with the other (Po1) and hence does not have a near-constant radius. The complete lack of human proteins between axes IN and RT, IN and PR and PR and RT (i.e., no red edges) tells us that these three HIV proteins are relatively isolated. HIV protein Po1 on the other hand is very central to this system as it participates in virtually all the edges, which is to say that it interacts with many human proteins.

Acknowledgements

Naturally, I thank Martin Krzywinski for numerous helpful communications. I also appreciate helpful discussions on gene ontology concepts with my colleague Professor Chet Fornari.

¹⁸ The replacement of nodes with axes is one way hive plots help us think about the data differently

¹⁹ Unlike the more standard network graphs where a protein would be a node rather than an edge



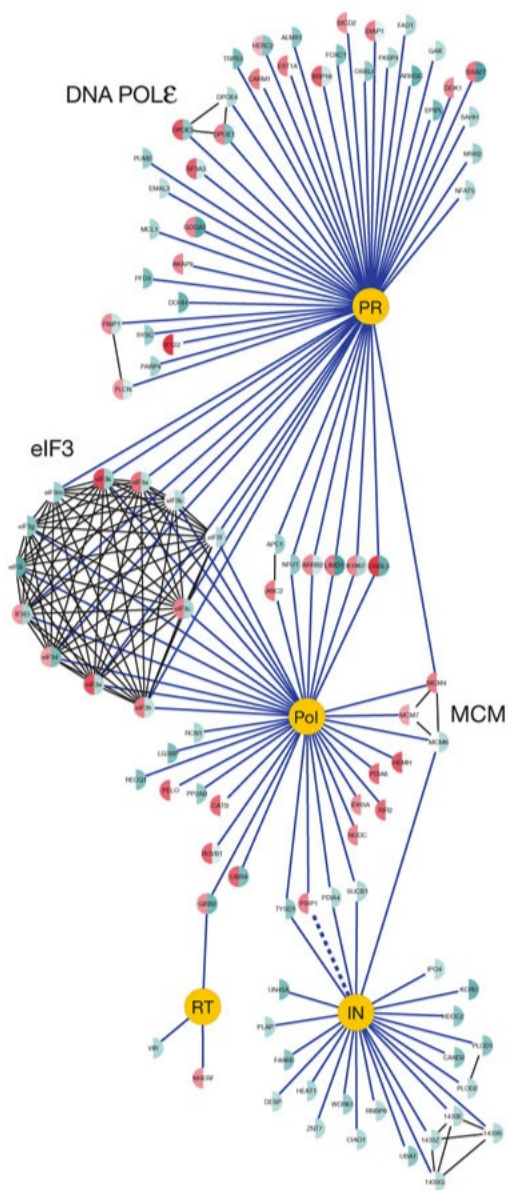


Figure 9: Subnet used to demonstrate the hive plot creation process

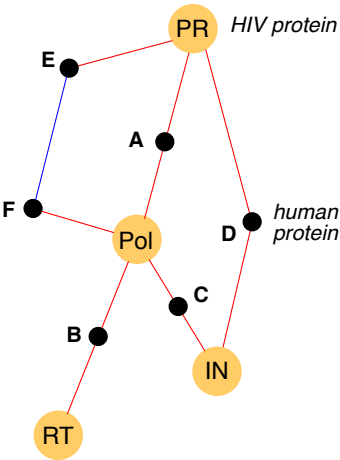


Figure 10: A portion of the network

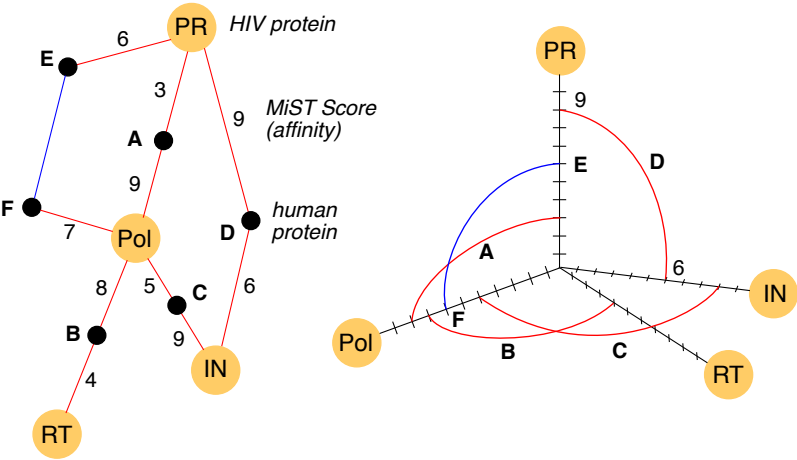


Figure 11: How the network is mapped onto a tetrahedral hive plot

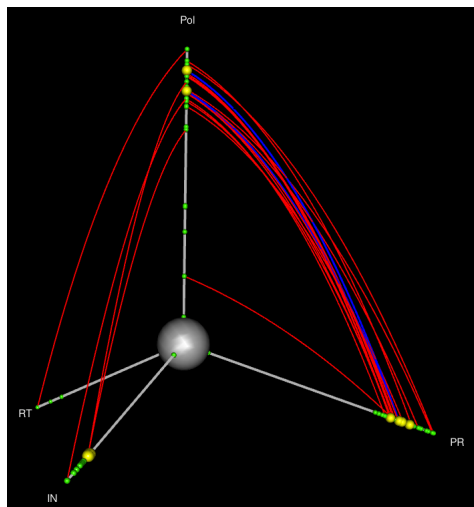


Figure 12: HIV-human protein-protein interaction

Appendices

Performance

HiveR draws hive plots very quickly when using either `plotHive` or `plot3dHive`. Figure 13 shows the performance of `plotHive` on a MacBook Pro running OSX 10.7.4 using 8 Mb RAM and an Intel i7 chip at 2 GHz. Figure 14 shows the performance for `plot3dHive`.

Drawing 3D Spline Curves

One of the challenges in developing HiveR was that there were no algorithms for drawing 3D spline curves available. Consequently, I wrote a set of functions that take 2 end points in 3D space, rotates them into a 2D space, computes a spline curve, and then rotates the curve back into the original 3D space. The process is thoroughly vetted and robust. A 3D spline is shown in Figure 15. The main workhorse is the function `rCSR`.

HiveR vs. Perl Prototype

The original hive plot drawing program written by Krzywinski was written in *Perl*. There are now versions in *Java* and *D3*; see www.hiveplot.com Listed below are some differences between HiveR and the *Perl* prototype.

- In the prototype one can clone an axis to show connections that would start and end on the same axis. In HiveR, one can simply add a new axis based upon some property of the system. Alterna-

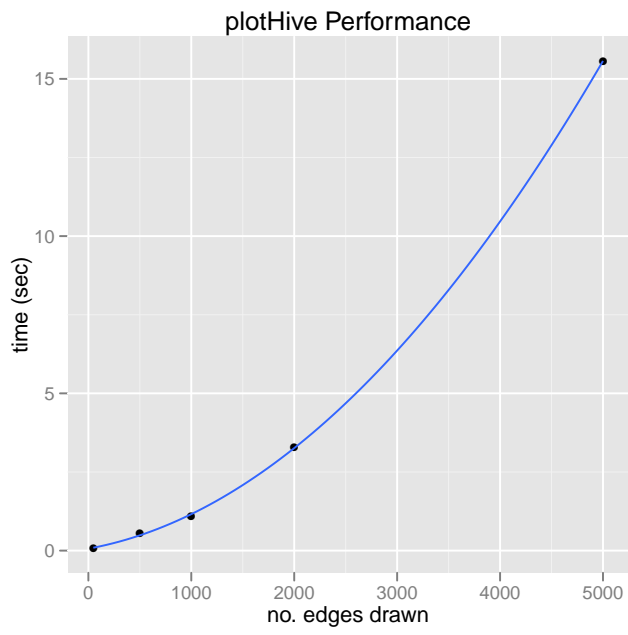


Figure 13: Performance of plotHive

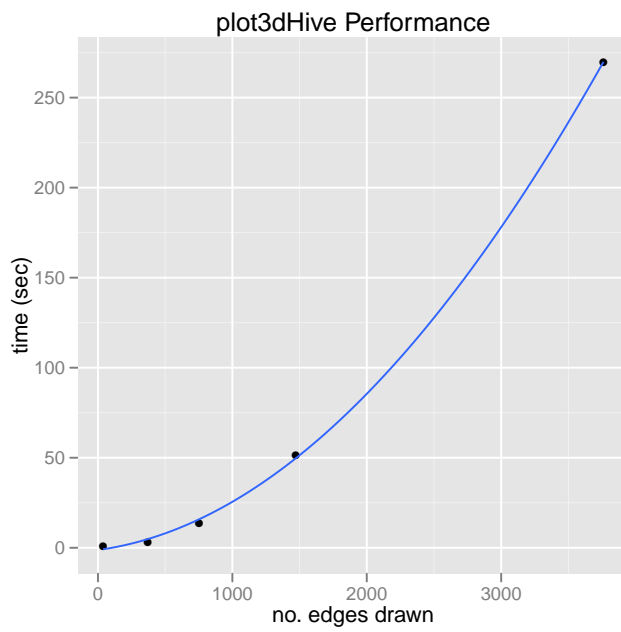


Figure 14: Performance of plot3dHive

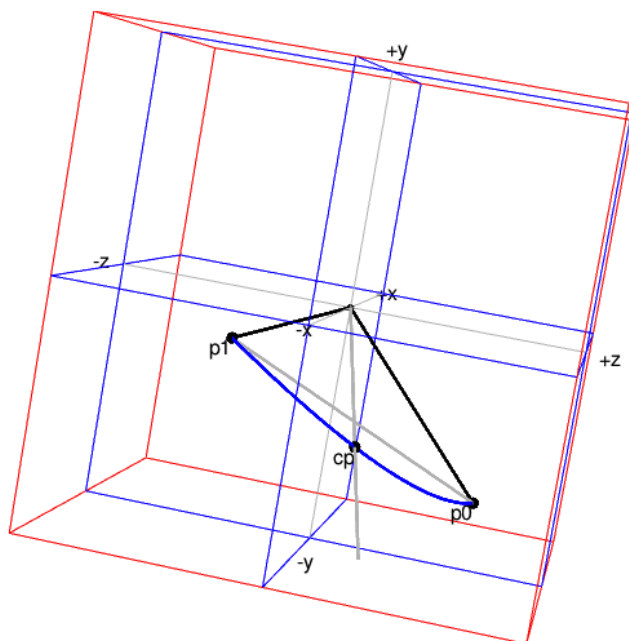


Figure 15: A 3D spline

tively, for 2D hive plots, HiveR is able to show edges that start & end on the same axis.

- No segmentation of an axis is currently possible with HiveR
- The prototype uses bezier curves to create the edges; HiveR uses splines with a single slightly off-center control point.

Features Under Consideration

1. Add the ability to subtract 2 hive plots and display the result.
2. Set up a mechanism to automatically permute the axes in 3D mode when the number of axes = 5 or 6 so that the best option can be selected. Might also be worth doing in 2D mode for 4-6 axes, except in this case it's not a question of how you display but how you import the data. Wegman²⁰ has a formula describing all possible combinations that would be needed.
3. More ways to import various formats are needed.
4. Move to an entirely different graphics system for 2D hive plots so that tool tips and various types of edge highlight/labeling is possible by mouse action. Package cranvas appears to be the ticket, but it is still in development.

²⁰ Wegman, 1990

References

Socorro Gama-Castro, Heladia Salgado, Martin Peralta-Gil, Alberto Santos-Zavaleta, Luis Muniz-Rascado, Hilda Solano-Lira, Veronica Jimenez-Jacinto, Verena Weiss, Jair S. Garcia-Sotelo, Alejandra Lopez-Fuentes, Liliana Porron-Sotelo, Shirley Alquicira-Hernandez, Alejandra Medina-Rivera, Irma Martinez-Flores, Kevin Alquicira-Hernandez, Ruth Martinez-Adame, Cesar Bonavides-Martinez, Juan Miranda-Rios, Araceli M. Huerta, Alfredo Mendoza-Vargas, Leonardo Collado-Torres, Blanca Taboada, Leticia Vega-Alvarado, Maricela Olvera, Leticia Olvera, Ricardo Grande, Enrique Morett, and Julio Collado-Vides. RegulonDB version 7.0: transcriptional regulation of *Escherichia coli* K-12 integrated within genetic sensory response units (Gensor Units). *Nucleic Acid Research*, 39(1):D98–D105, January 2011. ISSN 0305-1048. DOI: 10.1093/nar/gkq1110.

Bryan A. Hanson. *FuncMap: Hive plots of R package function calls*, 2011. R package version 1.0-1.

Stefanie Jaeger, Peter Cimerancic, Natali Gulbahce, Jeffrey R. Johnson, Kathryn E. McGovern, Starlynn C. Clarke, Michael Shales, Gaelle Mercenne, Lars Pache, Kathy Li, Hilda Hernandez, Gwendolyn M. Jang, Shoshannah L. Roth, Eyal Akiva, John Marlett, Melanie Stephens, Ivan D’Orso, Jason Fernandes, Marie Fahey, Cathal Mahon, Anthony J. O’Donoghue, Aleksandar Todorovic, John H. Morris, David A. Maltby, Tom Alber, Gerard Cagney, Frederic D. Bushman, John A. Young, Sumit K. Chanda, Wesley I. Sundquist, Tanja Kortemme, Ryan D. Hernandez, Charles S. Craik, Alma Burlingame, Andrej Sali, Alan D. Frankel, and Nevan J. Krogan. Global landscape of HIV-human protein complexes. *NATURE*, 481(7381):365–370, JAN 19 2012. ISSN 0028-0836. DOI: 10.1038/nature10719.

Martin Krzywinski, Inanc Birol, Steven JM Jones, and Marco A Marra. Hive plots – rational approach to visualizing networks. *Briefings in Bioinformatics*, 2011. DOI: 10.1093/bib/bbr069. URL <http://bib.oxfordjournals.org/content/early/2011/12/09/bib.bbr069.abstract>.

D. P. Vazquez and D. Simberloff. Changes in interaction biodiversity induced by an introduced ungulate. *Ecology Letters*, 6:1077–1083, 2003.

Edward J. Wegman. Hyperdimensional data-analysis using parallel coordinates. *Journal of the American Statistical Association*, 85(411): 664–675, Sep 1990. DOI: 10.2307/2290001.